

PART OF S. 1/2, SEC. 13 & N. 1/2, SEC. 24, T.5N., R.3W., S.L.B. & M.

HOOPER CITY  
BLOCKS 11 TO 14 PLAT "A"

TAXING UNIT: 376

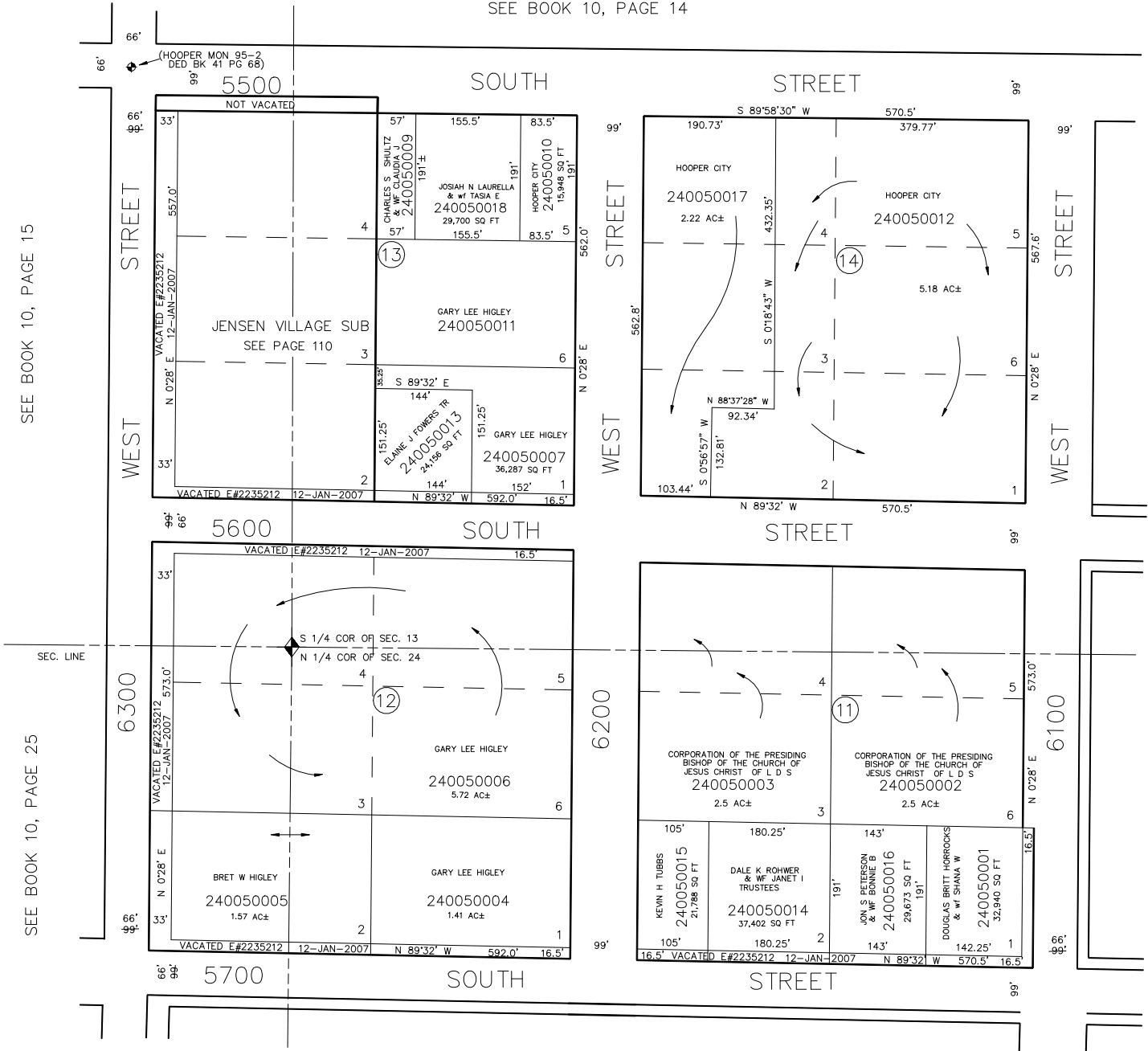
SCALE 1" = 120'

SEE BOOK 10, PAGE 14

SEE BOOK 10, PAGE 15

SEE BOOK 10, PAGE 25

SEE PAGE 4



SEE PAGE 3